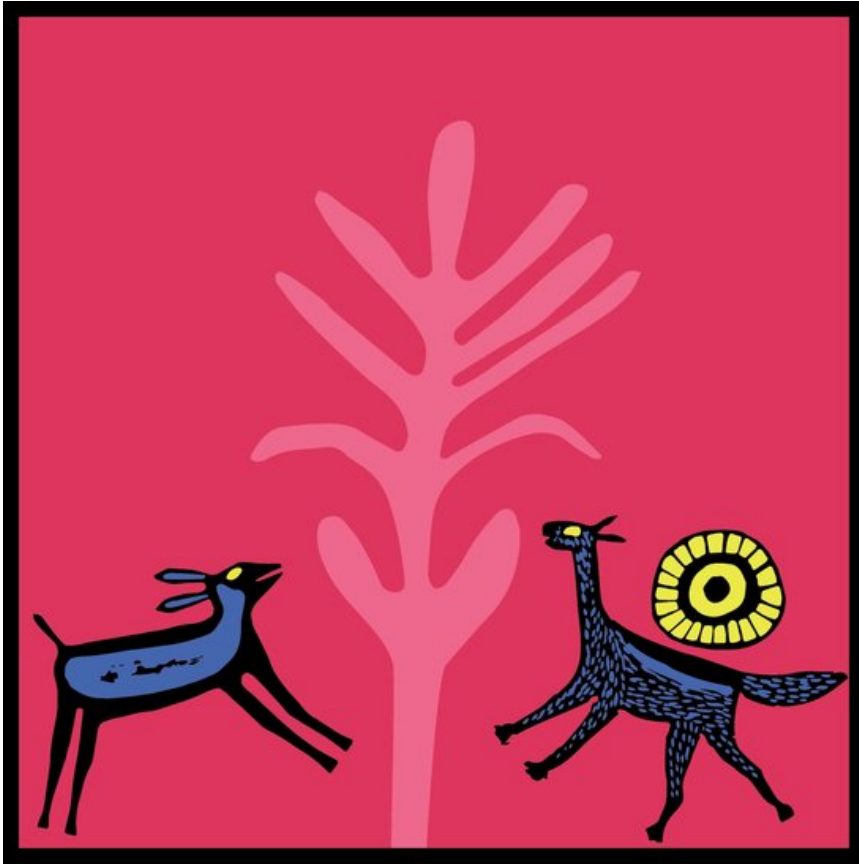


Phokoje le letsatsi

Traditional San story
Setswana



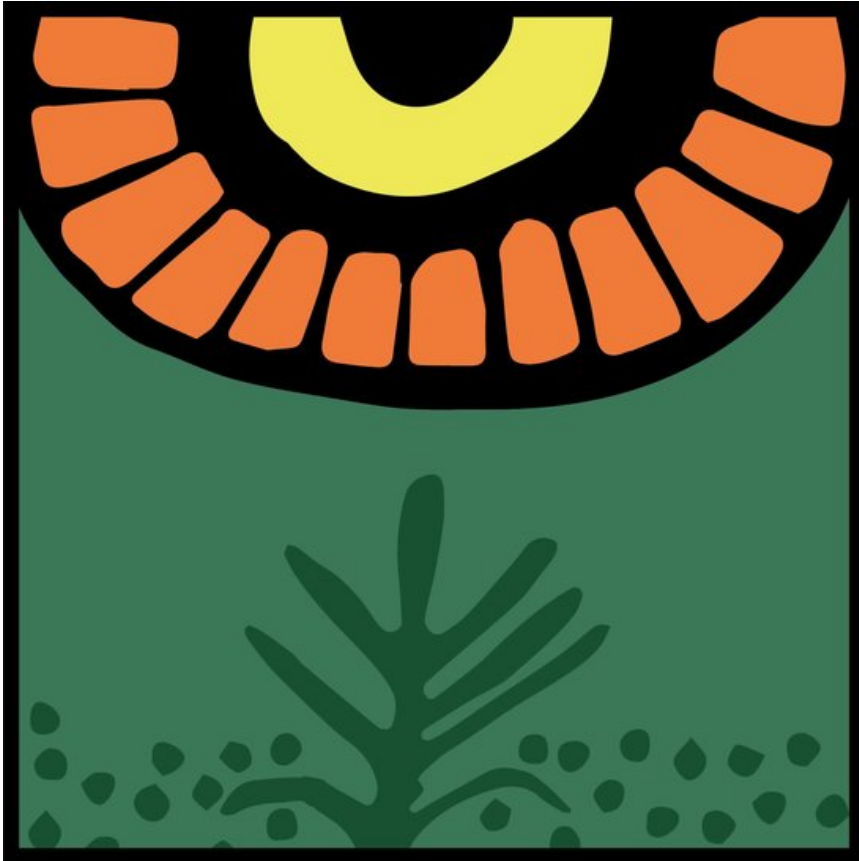


Bogologolo-tala go ne go nale phokoje ya seelele ebile e le motlapa. Phokoje o ne a dula le rragwe wa motsofadi kwa sekgweng sa Kgalagadi.

Ka moso o o latelang fa monnamogolo Phokoje a tsoga, o ne a fitlhela morwa wa gagwe wa motlapa a robetse mo letsatsing. O ne a sa apaya ebile dipodi di sa le mo lesakeng!

“Mosimane ke wena, o motlapa!
Tsamaya o ye go batla mosadi. Ke setse ke tsofetse gore nka go tlhokomela,” ga rialo monnamogolo. Phokoje o ne a tlola mme a isa dipodi mafulong.

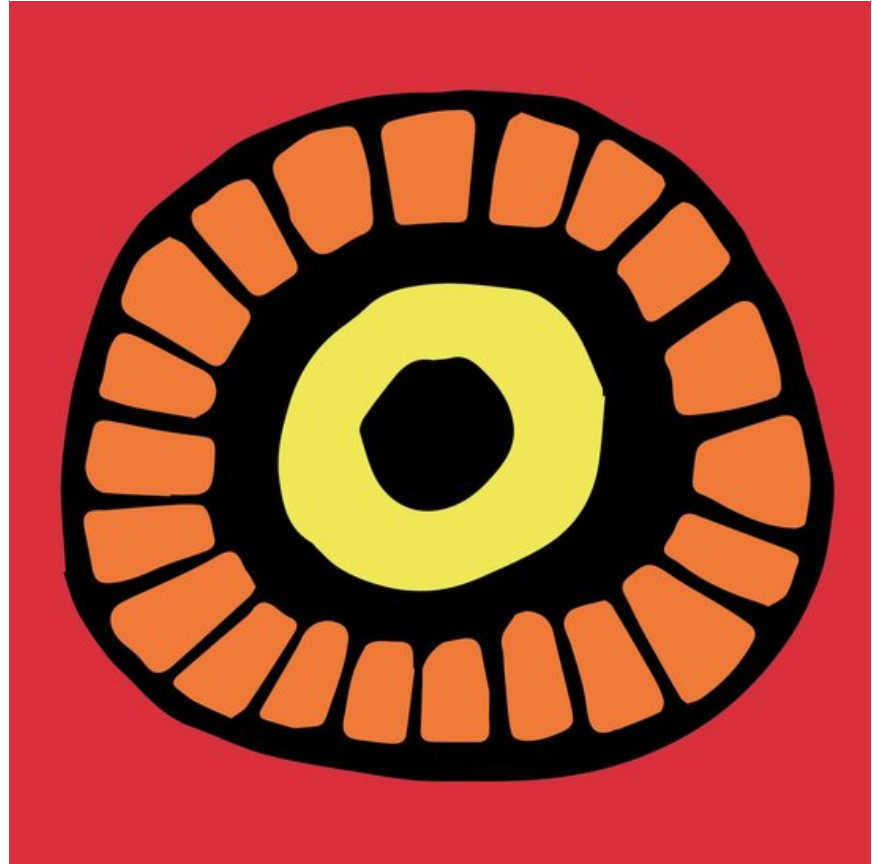


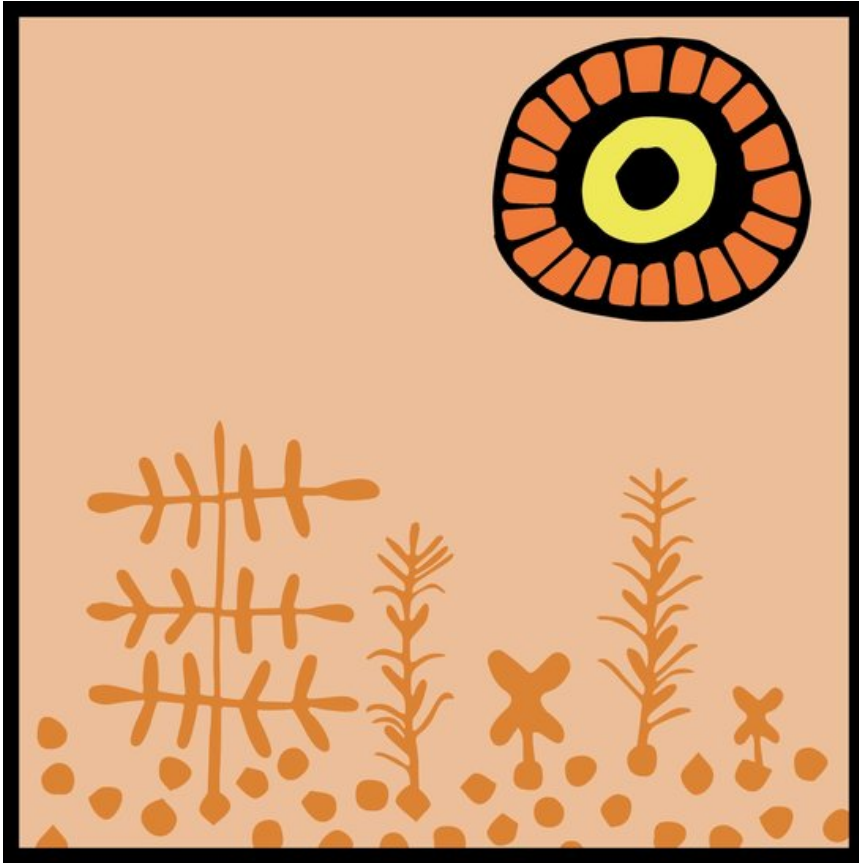


Phokoje o ile a bona phatsimo mo sekgweng mme a makala. O ile a tsmaela gaufi le letlapa le le neng le bontsha phatsimo. Fa a ntse a atamela, phatsimo e e ne e bontsha bontle jo bo seng kana ka sepe. Ka gongwe se e ka nna mosadi wa gagwe?!

“O montle jang,” Phokoje a rialo mo phatsimong e. “Mme fela o mang? Ke goreng o le esi?”

“Ke nna letsatsi,” phatsimo ya araba. “Ba lelapa la me ba ntlogetse fa fa ba fuduga. Ba ne ba sa batle go ntsaya. Ke fisa thata.”





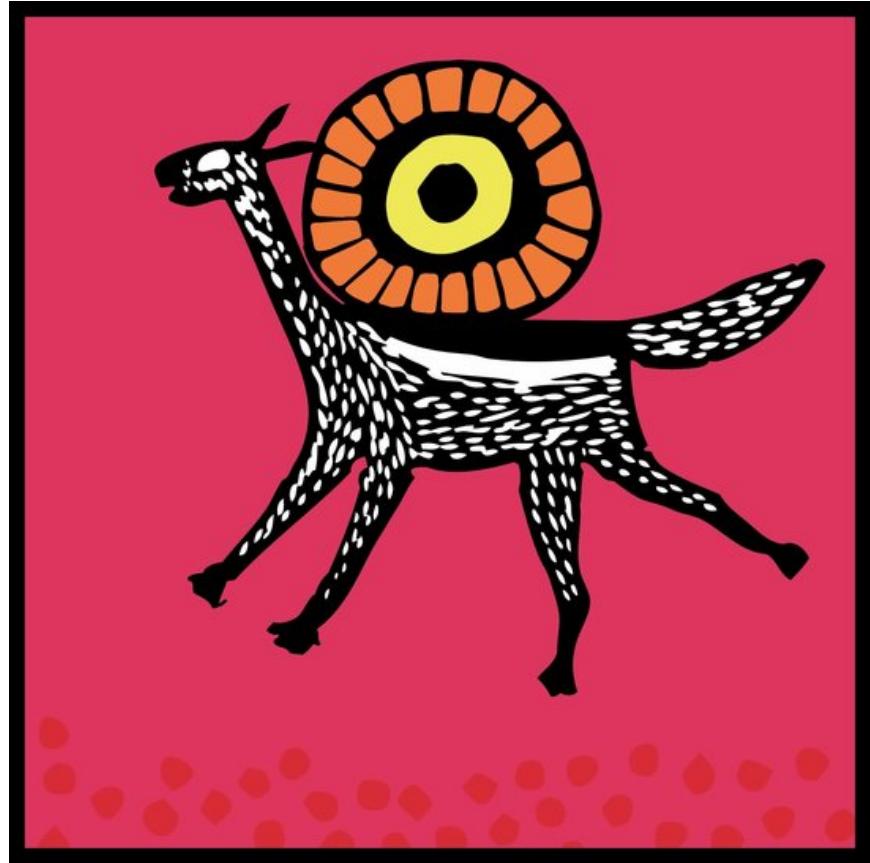
Phokoje a re, “A bontle jo bo kana! Ke tla go tsaya. Ke tla go isa kwa lapeng la me go ya go kopana le rre.”

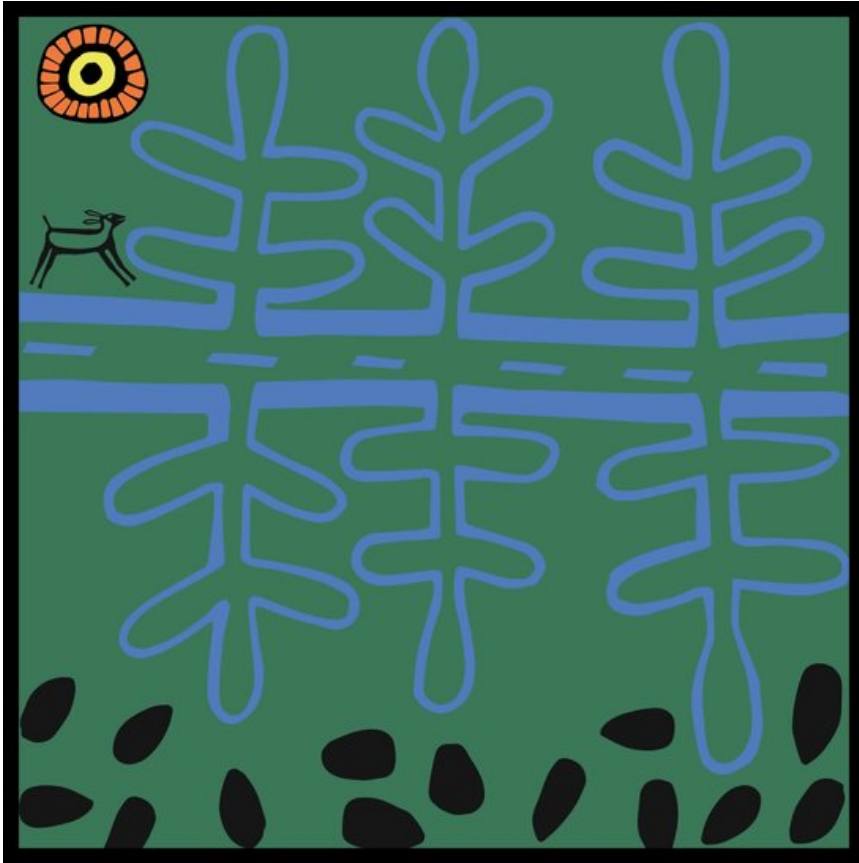
“Go siame, o ka ntsaya. Mme fela o se ngongorege fa ke nna mogote thata,” ga rialo letsatsi.

Phokoje o ne a rwala letsatsi ka mokotla wa gagwe mme ba simolola loeto lwa go ya gae. Go se go ye kae, ke fa letsatsi le fisa moriri wa ga phokoje wa mokotla.

“A o ka fologa mo mokotleng wa me? Ke tlhoka go ikhutsa,” ga rialo Phokoje. Mokotla wa gagwe o ne o le botlhoko tota ebile a sa kgone le go tsamaya.

“Tswelela go tsamaya!” ga rialo letsatsi. “Ke go boletse gore ga ke batle dingongorego tsa gago!”





Phokoje o ne a bona legong le legolo go kgabaganya tsela. O ile a gagabela ka fa tlase ga lona gore letsatsi le tle le wele mo fatshe. Mme legong le ile la goga letlalo la ga Phokoje le moriri wa lona mme le tsone tsa sala kwa morago le letsatsi.

Phokoje wa batho o ne a ya gae kwa ntle ga letlalo le moriri mo mokotleng, le mosadi tota a sena ena.

Rragwe o ne a oka letlalo la gagwe ka dioli tse di kgethegileng. Letlalo la gagwe le moriri di ne tsa gola sentle gape.





Fela letlalo le lešwa le moriri wa gagwe di ne di farologana le tsa mmele otlhe wa gagwe. Se e ne ya nna segopotso mo go ena gore a se tlhole a tlaela gape.

Ka ga tlhamane e

Ka ngwaga wa 2005, motlhaba tlhamane e, Bega Cgase wa kwa Sekakeng sa Kgalagadi kwa nageng ya Botswana o ile a tlhabela Marlene Winber tlhamane e. Marlene ke ene a re bolelelang tlhamane e fa. Tlhamane e e tlhagelela ka mefuta e e farologaneng mo merafeng e e farologaneng ya Masarwa mo Borwa jwa Aforika. Tlhamane e e thiba makolwane a a tlaetseng go nna kelotlhoko go se tsiediwe ke dipopego tsa kwa ntle tsa basetsana. Gape e gakolola batsadi go se pateletse lenyalo mo baneng ba bona fela gore banne le thuso yam o lelapeng. Gape e leka go gatelela maatla a letsatsi mo sekakeng le go dira se dilthamane di se dirang- go fa dipopo tsa tlhago bothofatso.

Ditshwantsho mo tlhamaneng e di dirilwe ke Marlene Winberg mme tsa diriwa ka kgatiso ya setegeniki sa khomputara ke Satsiri Winberg, a thusitswe ke botswerere jwa Mayeka Arts Collection tsa botaki jwa Masarwa.

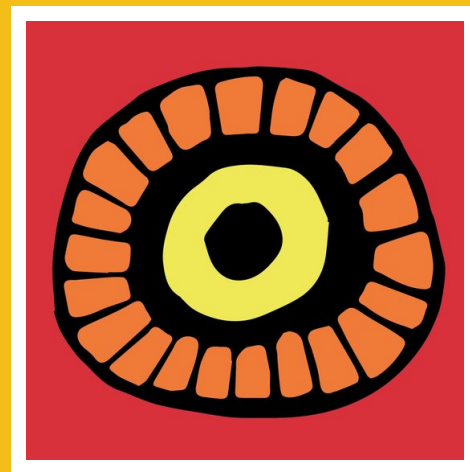
Phokoje le letsatsi

Writer: Traditional San story

Illustration: Manyeka Arts Trust

Translated By: Lorato Trok

Language: Setswana



The Manyeka Arts Trust celebrates the traditions of southern African San storytellers. www.manyeka.co.za

© Manyeka Arts Trust, 2014



This work is licensed under a Creative Commons Attribution
(CC-BY) Version 3.0 Unported Licence

Disclaimer: You are free to download, copy, translate or adapt this story and use the illustrations as long as you attribute or credit the original author/s and illustrator/s.

Saide 
South African Institute
for Distance Education

www.africanstorybook.org
A Saide Initiative